

日本東京 漂浮庭院住宅

Courtyard House without Second Floor, Tokyo, Japan

山本卓郎建築設計事務所
Takuro Yamamoto Architects

主要建築師：山本卓郎建築設計事務所

山本卓郎・柳智子

結構工程：NCC公司・岡本悠佑

施工單位：需要爾設計・渡邊剛之、渡辺剛平

空間性質：住宅

建築面積：84.81平方公尺

主體結構：木造

座落位置：日本東京

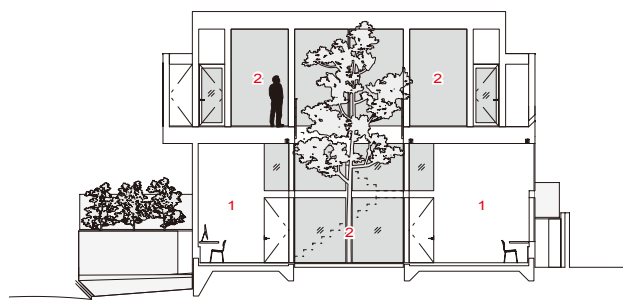
影像：鈴木研一・山本卓郎建築設計事務所

文字：山本卓郎建築設計事務所

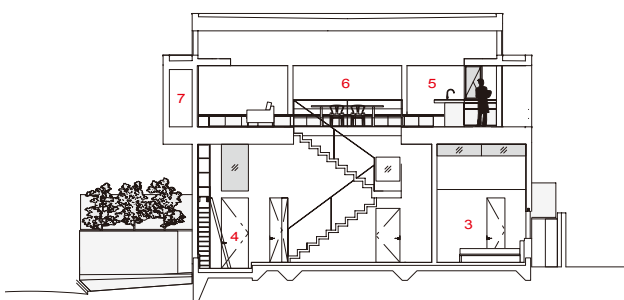
採訪：王麗如

核稿：陳宗耀

Principal Architects · Takuro Yamamoto Architects ·
Takuro Yamamoto · Tomoko Yanagi
Structural Engineering · NCC Corporation · Yusuke Okamoto
Contractor · REMOL DESIGN · Hiroyuki Watanabe ·
Syuhei Watanabe
Character of Space · Residence
Building Area · 84.81 m²
Principal Structure · Wooden rigid frame
Location · Tokyo, Japan
Photos · Kentichi Suzuki · Takuro Yamamoto Architects
Text · Takuro Yamamoto Architects
Interview · Ana Wang
Review · Jason Chen



剖面圖 A-A' SECTION A-A'



剖面圖 B-B' SECTION B-B'

1. 工作室
2. 庭院
3. 房間
4. 入口
5. 廚房
6. 客廳
7. 戶外儲物間

1. work room
2. courtyard
3. bedroom
4. entrance
5. kitchen
6. living room
7. outdoor storage

本案坐落於東京一座安靜住宅區，基於業主夫妻的期望，團隊打造出彷彿漂浮於空中的「全白庭院住宅」。庭院設計於低層住宅區中並不顯突兀，但若遵循傳統，設置於地面層，則易於緊密的房屋群中失去居住的隱密性；而若於周圍建置高牆，則會造成空間採光的阻礙。因此設計團隊選擇反向思考，將庭院建置於高處，如此一來，居者既不必擔心周圍比鄰的影響，亦可悄悄遠離城市的視線，在家中享受廣闊的太空視野，起居空間也能夠面向庭院，造就與自然相伴的全新生活提案。

另一方面，由於業主僅需兩人生活的必要空間面積，因此團隊選擇將二樓去除，留下地面與第三樓層，使天花高度可上升至兩倍，造就廣闊的空間氛圍；三樓為客廳與庭院組成的起居空間，作為生活的重心；而地面層則劃分為小型的功能空間，包括浴室、臥室以及兩個工作室。由於天花的提高，使整體空間更加通透，陽光亦能透過高層的落窗灑下，造就全室良好的採光，地面層的兩間工作室明亮舒適，相對而立，下層更種有日本山茶葉樹點綴，成就質感生活的悠悠一隅。

綜觀整體，本案打破大空間才可坐擁較高天花的傳統印象，以空中庭院的方式，讓小宅享有寬廣的空間、充足的採光，以及與周圍景觀相連的可能性，打造創新的建築模式，亦為東京的密集式城市住宅提供一項全新的空間規劃方案。

When we were asked to plan a new house in a quiet residential area in Tokyo, the client couple's request was to create a courtyard-style house. What we envisioned at the site was a courtyard floating in the sky. The surrounding area is a low-rise residential area popular for the undulating terrain and abundant sunshine, so a courtyard is not out of place. However, the surrounding houses are dense and include three-story buildings, and a courtyard-style house on the ground level, as the theory goes, would be overlooked by the neighbors, and the courtyard would be in full view. To avoid this problem, high walls around the courtyard would have made the courtyard a dark and enclosed space. Conversely, if we could place the courtyard as high as possible, slightly out of sight of the city, we would be able to create a refreshing house with a wide sky to enjoy. By having a courtyard on the third floor where one does not need to worry about neighbors' houses, and by making the living room that faces the courtyard the main living space, it is possible to propose a lifestyle of living with the sky.

On the other hand, since a couple will be living in the house, a large floor space is not required. A three-story house might be too large, so we decided to eliminate the second floor of the house, leaving only the first and third floors. On the third floor, we placed a large space consisting of the living room and courtyard as the center of the life, and on the first floor, we placed smaller functional spaces such as bathroom, bedroom, and two work rooms to support the space on the third floor from below. As a result, even though the first floor consists of small rooms, the ceiling became higher because of the absence of the second floor, almost double the normal height, and higher than the living room on the third floor, which is the main space of the house. The sun streaming on the first floor through the high windows provides good lighting, so two bright and comfortable workrooms could be located facing each other with a Japanese dogwood tree in the lower courtyard between them.

The relationship between ceiling height and the nature of the space is usually inverted with higher ceilings in the larger main living spaces and lower ceilings in the smaller functional spaces. However, we found this inversion of the relationship rather interesting and thought that this configuration, combined with the floating garden in the sky, could create a comfortable space to live in. We hope that we could have shown one possibility to urban courtyard-style houses in Tokyo that are always in close proximity to their neighbors.



左頁：本案以空中庭院讓小宅亦能享有寬廣的空間感及充足的採光



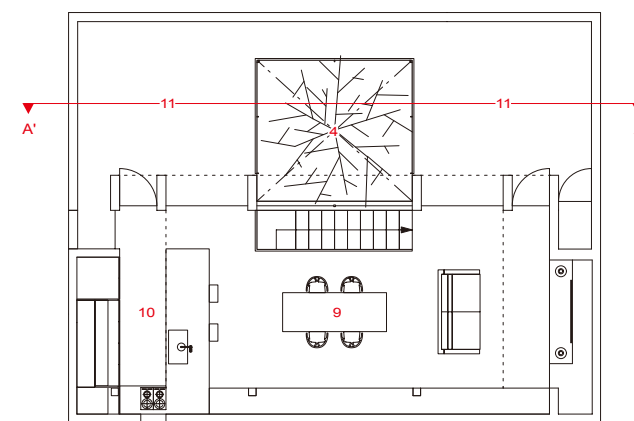


左頁・右頁：起居空間面向庭院，提供廣闊天空視野

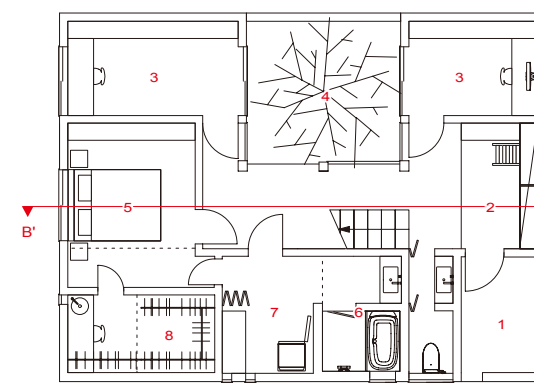


- 1. 入口門廊 2. 入口 3. 工作室 4. 庭院 5. 房間 6. 盥洗室
- 7. 洗衣房 8. 步入式衣櫥 9. 客廳 10. 廚房 11. 陽台

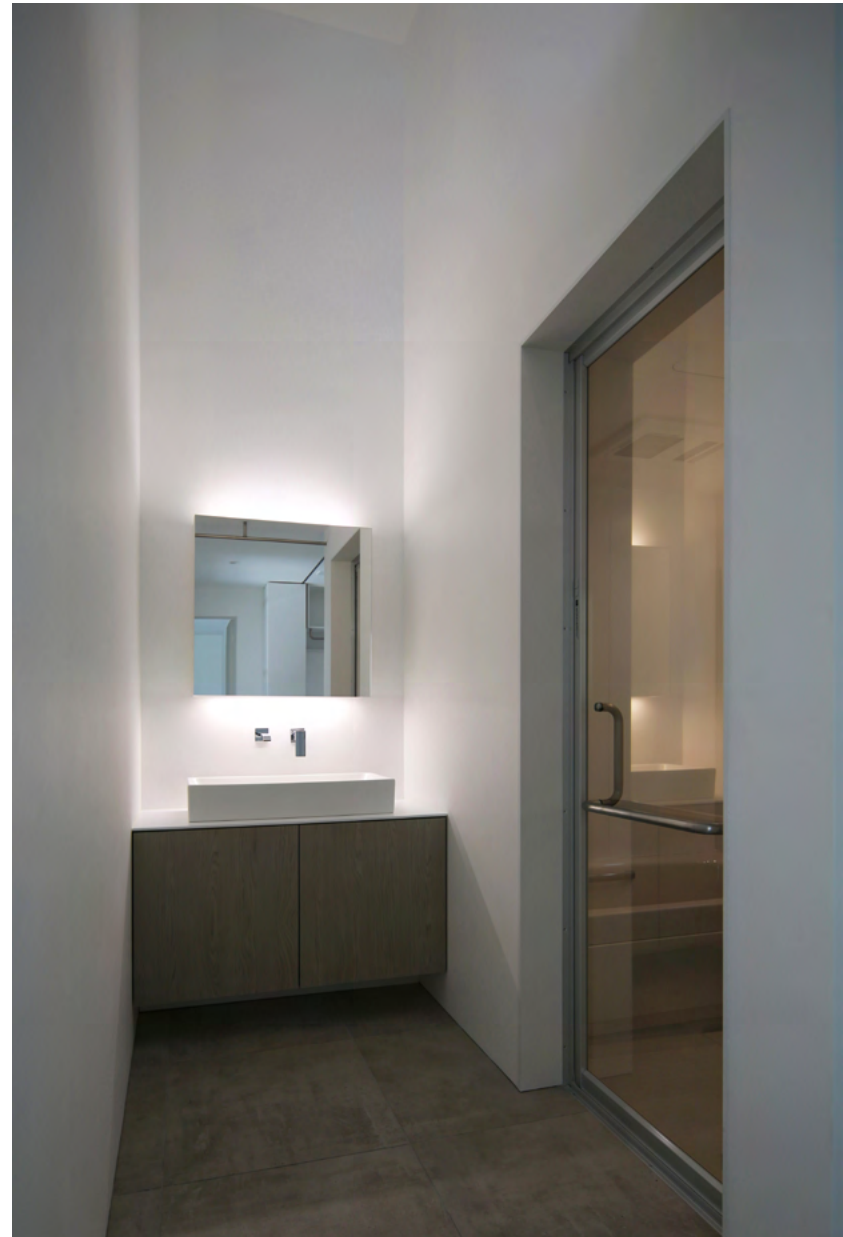
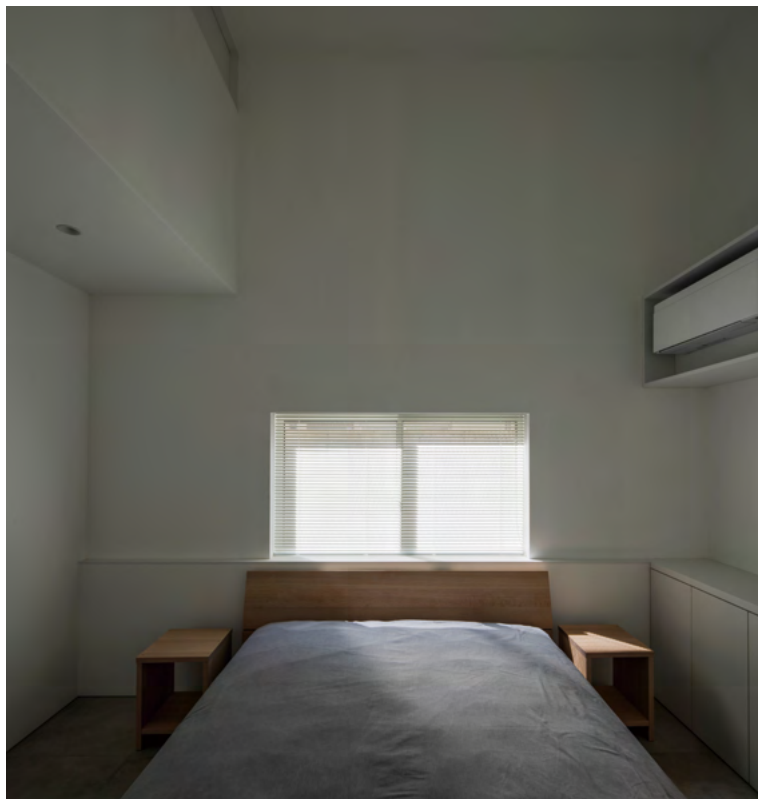
- 1. entrance proch 2. entrance 3. workroom 4. courtyard 5. bedroom 6. bathroom
- 7. laundry room 8. walk in closet 9. living room 10. kitchen 11. terrace



三樓平面圖 THIRD FLOOR PLAN



一樓平面圖 GROUND FLOOR PLAN



左頁・右頁：團隊打造創新的建築模式，提供都市密集式住宅一項未來的空間規劃方案

